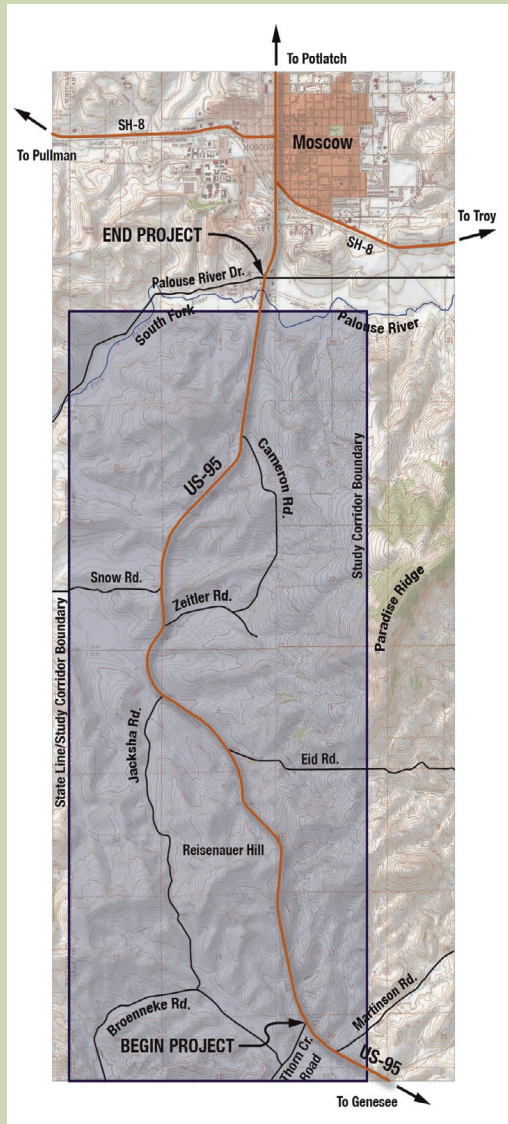


PROJECT AREA MAP

The public can help determine the new route of U.S. 95 from Thorncreek Road to Moscow by participating in public involvement opportunities.



Construction to widen the first 14.5 miles of U.S. 95 from Top of Lewiston Hill to Thorncreek Road will be complete in 2007. To learn more, please call ITD District 2 at 799-5090.

FOR MORE INFORMATION

To learn more about U.S. 95 Thorncreek Road to Moscow and the opportunities for public involvement, please visit our Web site at:

<http://www.itd.idaho.gov/getinvolved/d2/>

or contact: Ken Helm,

ITD Project Manager, 799-5090

or send an email to:

thorncreekroadtomoscow@itd.idaho.gov



U.S. 95 THORNCREEK ROAD TO MOSCOW

PROJECT DESCRIPTION

The U.S. 95 Thorncreek Road to Moscow Project is a study led by the Idaho Transportation Department (ITD) to determine an alignment for nearly 6.5 miles of U.S. 95 in Latah County. Currently, U.S. 95 between Thorncreek Road and Moscow is a two-lane highway classified as a principal arterial. It is operating near capacity and has several curves that do not meet current engineering standards. The proposed project consists of replacing the existing two-lane facility with a four-lane divided highway. The project area is the 6.5 miles between Thorncreek Road and the recently completed south fork of the Palouse River Bridge.



The study will look at several potential alignments (the exact location of the roadway), and a “no build” option. The process includes:

- **Engineering** – Providing the design parameters for a safe and efficient facility
- **Right-of-Way** – Reviewing alignments to show the impacts that would occur on the property
- **Environmental analysis** – Identifying environmental impacts of possible alignments, including noise, air quality, land use, natural features (for example wildlife and wetlands), climate, socio-economic/community facilities and hazardous materials.

An Environmental Impact Statement (EIS) will be written as part of this project. An EIS is intended to help public officials make decisions based on environmental consequences and take action to protect the environment.

PUBLIC INVOLVEMENT

Public involvement is important to ITD and to an EIS. The public will have numerous ways to participate throughout the project, including:

- Open houses
- Workshops
- Public hearing

In addition, ITD will stay in contact with the public and be available to answer questions.

FOR MORE INFORMATION

To learn more about U.S. 95 Thorncreek Road to Moscow and the opportunities for public involvement, please visit our Web site at:

<http://www.itd.idaho.gov/getinvolved/d2/>

or contact: Ken Helm,

ITD Project Manager, 799-5090

or send an email to:

thorncreekroadtomoscow@itd.idaho.gov



**U.S. 95 THORNCREEK ROAD TO MOSCOW
PROJECT PROCESS AND SCHEDULE**



PROJECT BACKGROUND

U.S. Highway 95 is an important route for commercial, agricultural, recreational and residential traffic. It is the major link between northern and southern Idaho. This highway is of statewide significance and is designated as part of the National Highway System in the Transportation Efficiency Act of the 21st Century.

In 1998, ITD proposed a project to widen and improve a 21-mile section of U.S. 95 between Top of Lewiston Hill and Moscow. In order to design and construct this improvement, ITD prepared an Environmental Assessment (EA) based on the National Environmental Policy Act (NEPA). The EA documented the analysis of the environmental impacts of the new road. In September 2003, the U.S. District Court in Boise voided the EA for the 6.5-mile segment between Reisenauer Hill and the city of Moscow.

Based on the court ruling, ITD will conduct an Environmental Impact Statement (EIS) on this last segment. An EIS is the highest level of environmental review.